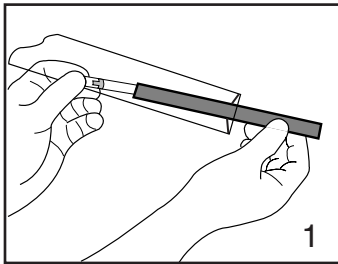


SLICER HEAT LAMP QUARTZ BULB INSTALLATION INSTRUCTIONS

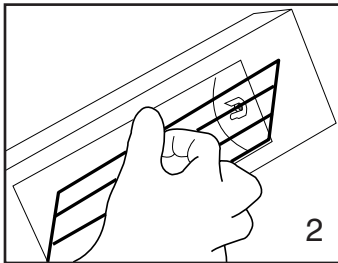
Product Numbers HLGS500N, HLBS500N, HLBS500-1, HL-GR1-ARB23

Please read carefully:

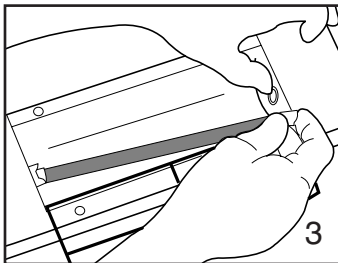


1. Install red sleeve on quartz lamp bulb. Observe all instructions on the lamp box, especially those concerning handling or *not touching* the lamp bulb. (It is easiest to keep clear plastic bag between fingers and bulb, but *clean* gloves would be best.)

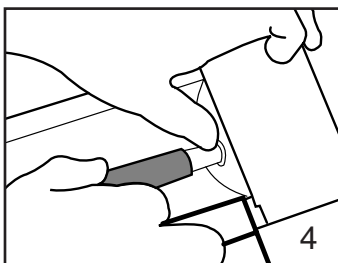
NOTE: Quartz lamp bulb and red sleeve are *very fragile*, so please use *extreme care*.



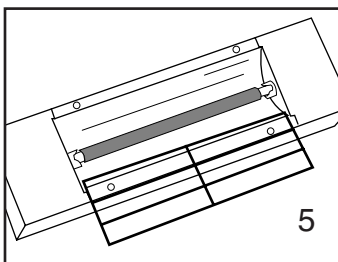
2. Open wire grill on lamp unit. Snap grill away from retainers, using thumb and forefinger. Swing grill open.



3. Place one end of bulb/sleeve assembly into one of the ceramic lamp sockets. Try to handle the *porcelain* ends of bulb rather than the glass.
Apply pressure to the opposite lamp socket—it will press back into the lamp unit.



4. Place free end of lamp onto the lamp socket you have pressed back. If needed, press back the opposite lamp socket by using careful pressure with the red sleeve, or simply have an assistant use finger pressure to depress the lamp socket.



5. Release pressure on the ceramic lamp socket. Lamp bulb should be securely held in place.
Close grill on lamp unit to complete installation.

For a complete list of the entire
Heat Lamp line, please refer to our catalog.

Worldwide Headquarters:
P.O. Box 53006
Oklahoma City, Oklahoma 73152-3006
(405) 475-5600 • FAX (405) 475-5607
1-800-654-8210
www.carlislefsp.com

European Distribution Center:
Edisonstraat 84, P.O. Box 110
6900 AC Zevenaar, The Netherlands
Tel +31/(0)316-596550 • Telex 45642
FAX +31/(0)316-333867
#104803610 Rev. 3/02

CARLISLE
FoodService Products