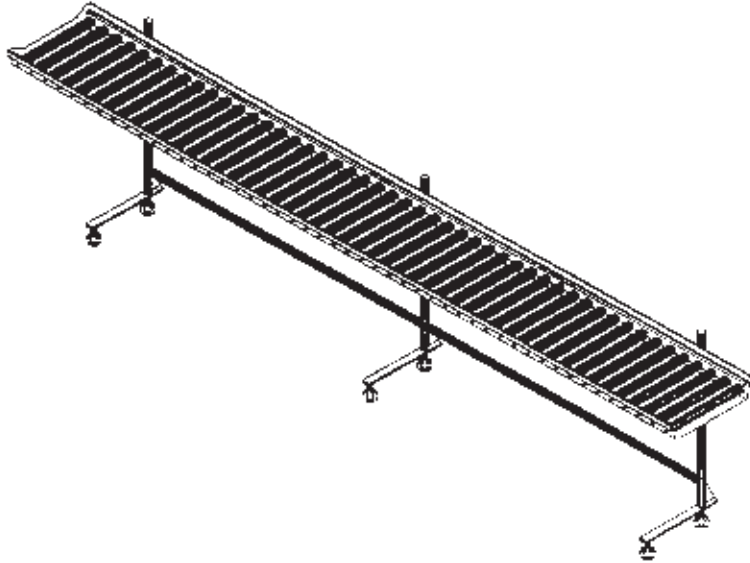


## CANTILEVER CONVEYORS



### Item Numbers

#### Cantilever Conveyors

- DXIESRC4
- DXIESRC5
- DXIESRC6
- DXIESRC7
- DXIESRC8

### Application

The straight-line cantilever conveyor is designed for tray make-up operations. The cantilever conveyor will help streamline tray assembly for any healthcare or catering operation.

This mobile unit is designed for easy cleaning and long life. Please consult factory for specific questions.

### Construction

The cantilever conveyor consists of a standard conveyor pan and standard roller assemblies. The cantilever conveyor uprights are made of 1.625" (4cm) diameter 16-gauge stainless steel tube.

Two uprights are required for a conveyor up to 6' in length, three uprights are required for conveyors over 6' long.

Uprights have 1.25" (3cm) 18-gauge stainless steel crossrails welded between for support and each upright has a 12-gauge stainless steel fully welded gusset for support.

Pan support consists of a 14-gauge stainless steel tube that slides over upright making an adjustable conveyor height.

Casters are 3"(8cm) diameter swivel plate-type (2 of 4 or 3 of 6 have brakes).

### Standard Features

- 3" (8cm) diameter casters
- Adjustable height
- S/S upright
- S/S frame

### Options

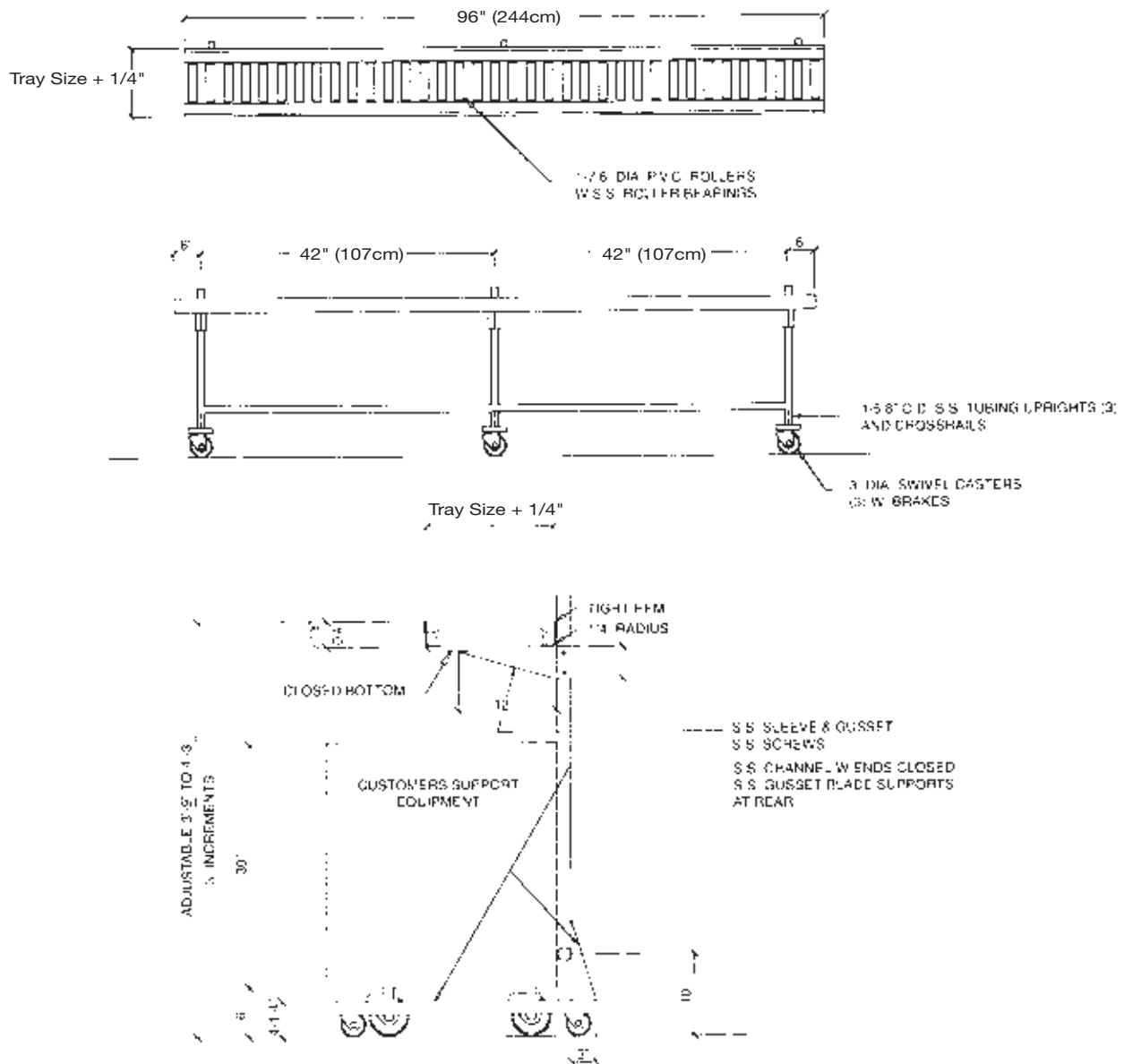
- Removable sections
- Field joint

### Warranty

One year parts and labor.

***We do not accept returns on any Dinex equipment or Dinex custom products. Please contact your local Dinex rep to ensure order accuracy prior to ordering.***

# CANTILEVER CONVEYORS



## Items and Dimensions

ITEM NUMBER	MODEL NUMBER	SIZE	SHIP WEIGHT
DXIESRC4	IESRC4	4 ft. (1.2 meter) section	90 lb. (41kg)
DXIESRC5	IESRC5	5 ft. (1.5 meter) section	110 lb. (50kg)
DXIESRC6	IESRC6	6 ft. (1.8 meter) section	130 lb. (59kg)
DXIESRC7	IESRC7	7 ft. (2.1 meter) section	150 lb. (68kg)
DXIESRC8	IESRC8	8 ft. (2.4 meter) section	170 lb. (77kg)

**DINEX**  
A CARLISLE COMPANY

4711 E Hefner Road  
Oklahoma City, OK 73131  
800.654.8210 • 405.475.5600  
www.dinex.com

Please confirm that you have the most current specification sheet by visiting [www.dinex.com](http://www.dinex.com).  
Dinex® reserves the right to change specifications and product design without notice.  
Such revisions do not entitle the buyer to corresponding changes, improvements, additions or replacements for previously purchased equipment.