

Dinex Insulated Ware

Dinex offers more insulated ware designs than any other company. This gives healthcare facilities options for a style that fits their décor and budget. We also have a great selection of accompanying non-insulated wares. Visit us at dinex.com for more information on our entire line.

Best

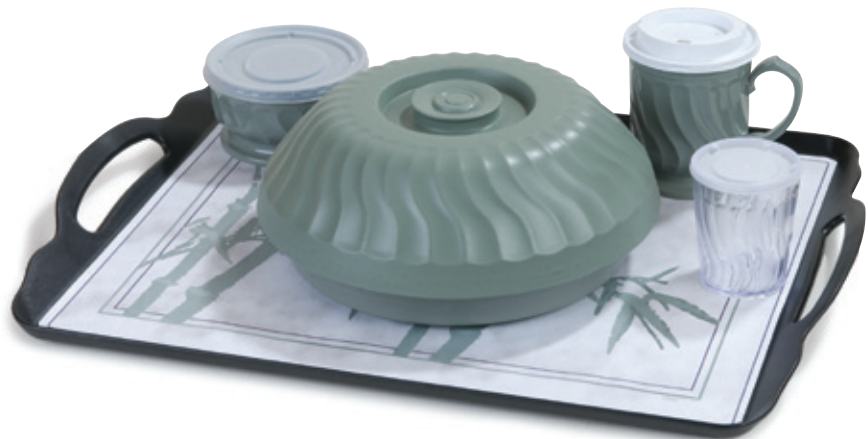


Fenwick

Our newest insulated ware style features a modern look and has non-insulated tumblers and cup to match.

Turnbury®

Our most popular style adds an air of refinement with the elegant look of china and has non-insulated tumblers, cup and bowl to match.



Better



Heritage®

This faceted stackable design has the best temperature retention in the industry.

Good



Classic

Our traditional stackable design features a texture to hide wear and tear.

Dinex Insulated Ware



Onyx(03)



Hunter Green(08)



Teal(15)



Latte(31)



Midnight Blue(50)



Mauve(56)



Cranberry(61)



Plum(68)



Chocolate(69)



Sage(84)

| Prod No | Description | Color | Pack | Cs Wt/Cube |
|-----------------|------------------------|------------------------------------|---------|------------|
| Fenwick | | | | |
| DX5000 | Mug | 03, 31, 50, 61, 84 | 48 ea | 11.90/1.55 |
| DX5200 | 5 oz Bowl | 03, 31, 50, 61, 84 | 48 ea | 7.80/0.94 |
| DX5300 | 9 oz Bowl | 03, 31, 50, 61, 84 | 48 ea | 11.20/1.38 |
| DX5400 | Dome | 03, 31, 50, 61, 84 | 12 ea | 10.00/0.93 |
| DX50008714 | Mug Lid | Translucent | 1500 ea | 7.50/1.89 |
| DX53008714 | Bowl Lid | Translucent | 1000 ea | 7.36/2.57 |
| DX50008775 | EZ Sip Lid | Translucent | 1000 ea | 7.50/1.75 |
| Turnbury | | | | |
| DX3000 | Mug | 03, 08, 31, 50, 61, 68, 84 | 48 ea | 12.00/1.57 |
| DX3200 | 5 oz Bowl | 03, 08, 31, 50, 61, 68, 84 | 48 ea | 8.00/0.94 |
| DX3300 | 9 oz Bowl | 03, 08, 31, 50, 61, 68, 84 | 48 ea | 11.47/1.38 |
| DX3400 | Dome | 03, 08, 31, 50, 61, 68, 84 | 12 ea | 10.00/0.93 |
| DX30008714 | Mug Lid | Translucent | 1500 ea | 13.00/1.87 |
| DX33008714 | Bowl Lid | Translucent | 1000 ea | 7.10/2.12 |
| DX30008775 | EZ Sip Lid | Translucent | 1000 ea | 7.50/2.34 |
| Heritage | | | | |
| DX4000 | Mug | 03, 15, 50, 56, 61, 84 | 48 ea | 9.70/1.46 |
| DX4200 | 5 oz Bowl | 03, 15, 50, 56, 61, 84 | 48 ea | 7.30/1.04 |
| DX4300 | 9 oz Bowl | 03, 15, 50, 56, 61, 84 | 48 ea | 9.60/1.49 |
| DX4500 | 12 oz Bowl | 50, 56, 61 | 48 ea | 10.10/1.66 |
| DX4400 | Dome | 03, 15, 50, 56, 61, 84 | 12 ea | 9.60/0.93 |
| DX40008714 | Mug Lid | Translucent | 2000 ea | 6.40/2.17 |
| DX43008714 | Bowl Lid | Translucent | 1000 ea | 4.70/1.72 |
| DX11858714 | 12 oz Bowl Lid | Translucent | 1000 ea | 5.70/1.41 |
| DX40008700 | Mug Lid | Clear | 2000 ea | 6.70/2.21 |
| DX43008700 | Bowl Lid | Clear | 1000 ea | 4.80/1.78 |
| DX11858700 | 12 oz Bowl Lid | Clear | 1000 ea | 5.70/1.43 |
| Classic | | | | |
| DX1197 | Mug | 15, 50, 56, 61, 69 | 48 ea | 9.57/1.26 |
| DX1105 | 5 oz Bowl | 15, 50, 56, 61, 69 | 48 ea | 6.80/0.85 |
| DX1185 | 9 oz Bowl | 15, 50, 56, 61, 69 | 48 ea | 9.40/1.26 |
| DX1173 | Dome | 15, 50, 56, 61, 69 | 12 ea | 9.50/1.10 |
| DX11948714 | Mug Lid | Translucent | 2000 ea | 7.40/1.96 |
| DX11858714 | Bowl Lid | Translucent | 1000 ea | 5.70/1.41 |
| DX11948700 | Mug Lid | Clear | 2000 ea | 7.10/2.06 |
| DX11858700 | Bowl Lid | Clear | 1000 ea | 5.70/1.43 |
| Bases | | | | |
| DX1077 | Insulated Base | 03, 08, 15, 31, 50, 56, 61, 68, 84 | 12 ea | 6.40/0.56 |
| DXTMP1097A | Stainless Steel Pellet | Stainless | 12 ea | 27.00/0.46 |
| DX1087 | Pellet Underliner | 03, 08, 15, 31, 50, 56, 61, 68, 84 | 12 ea | 7.50/0.71 |
| DX8210 | STS II/Turbo Temp Base | 03, 08, 31, 50, 61, 68, 84 | 12 ea | 18.40/0.79 |

The specifications and prices listed in this document are subject to change. Dinex does not assume responsibility for typographical errors.