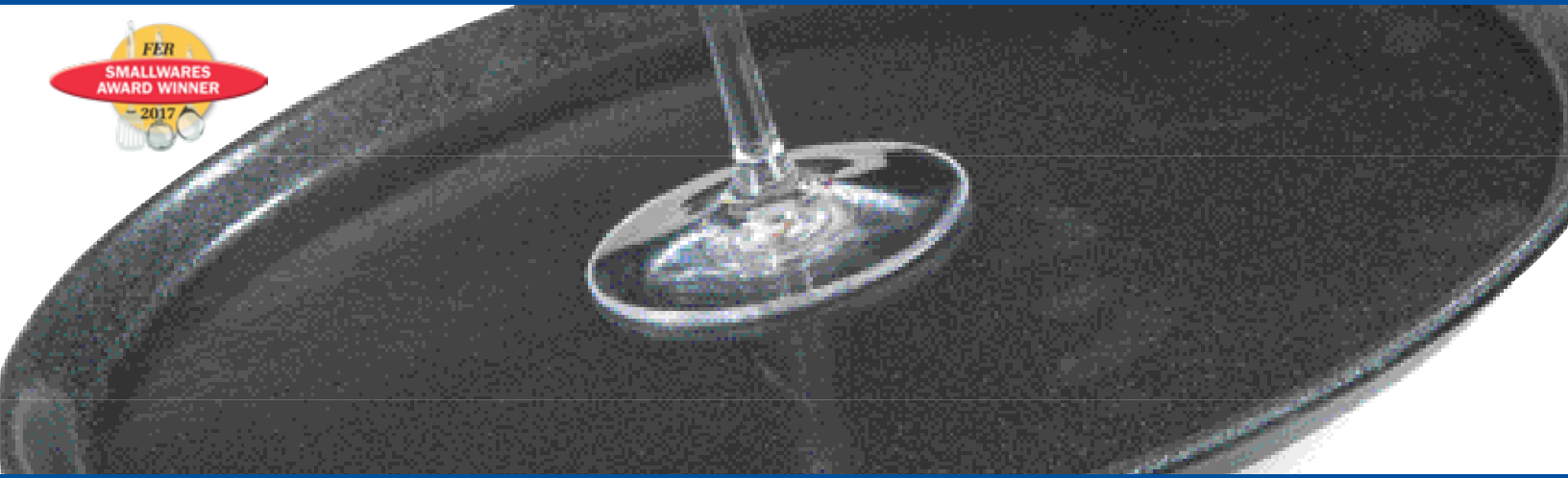


# Griptite™ 2 Service Trays

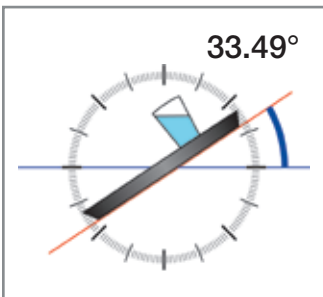


## Best Grip

Built from the ground up; the patent-pending Griptite 2 tray is unmatched. The long-life, non-skid surface grips drinkware and plates better – reducing spills, breakage, and cost. The coated tray edge is a bumper against heavy daily use. We take our trays through rigorous testing to ensure they excel in both function and durability.

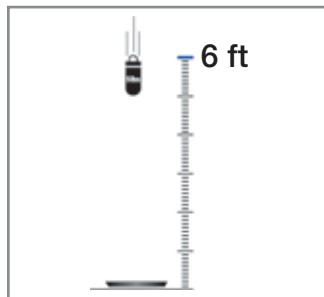


## Benefits



### Less Slip & Tip

Holds a full glass at a steeper angle than ever before



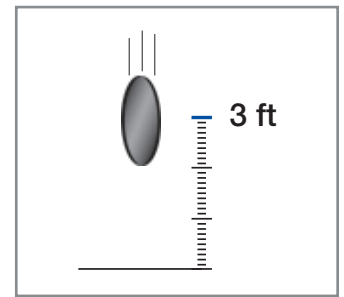
### Durable Materials

Impact and drop tested for superior performance



### Beautiful Surface

Looks great longer by resisting stains



### Long Lasting

Field-tested to withstand years of high-demand serving

The best skid resistance in the industry prevents drops, spills and falls

Non-skid surface delivers unmatched strength and stain resistance



New coated edges increases durability saving money in replacements

Patent-pending coating does not degrade over time so your trays will look new longer



Black (004)

Brown (076)

Prod No	Description	Color	Pack
<b>Griptite 2 Trays</b>			
1100GR2 <span style="color: blue;">▲</span>	Griptite 2 Round Tray 11.75"	004, 076	12 ea
1400GR2 <span style="color: blue;">▲</span>	Griptite 2 Round Tray 14.75"	004, 076	12 ea
1600GR2 <span style="color: blue;">▲</span>	Griptite 2 Round Tray 16"	004, 076	12 ea
2500GR2 <span style="color: blue;">▲</span>	Griptite 2 Oval Tray 24" x 19.25"	004, 076	6 ea
2700GR2 <span style="color: blue;">▲</span>	Griptite 2 Oval Tray 27" x 22.31"	004, 076	6 ea
3100GR2 <span style="color: blue;">▲</span>	Griptite 2 Oval Tray 31.5" x 23.5"	004, 076	6 ea
3253GR2 <span style="color: blue;">▲</span>	Griptite 2 Rectangular Tray 12.75" x 20.88"	004, 076	12 ea
1410GR2 <span style="color: blue;">▲</span>	Griptite 2 Rectangular Tray 13.81" x 10.63"	004, 076	12 ea
1612GR2 <span style="color: blue;">▲</span>	Griptite 2 Rectangular Tray 16.38" x 12.75"	004, 076	12 ea
1814GR2 <span style="color: blue;">▲</span>	Griptite 2 Rectangular Tray 18" x 14.88"	004, 076	12 ea
2015GR2 <span style="color: blue;">▲</span>	Griptite 2 Rectangular Tray 20.25" x 15"	004, 076	12 ea
2216GR2Q <span style="color: blue;">▲</span>	Griptite 2 Rectangular Tray 22" x 16"	004, 076	6 ea
1826GR2Q <span style="color: blue;">▲</span>	Griptite 2 Rectangular Tray 25.75" x 18"	004, 076	6 ea

NSF Listed products are designated with a ▲ and may be prefixed with an N

For more information visit [www.carlislefsp.com/foodservice-trays/griptite-trays](http://www.carlislefsp.com/foodservice-trays/griptite-trays)

©2017 Carlisle FoodService Products | Oklahoma City, OK 73131 | [www.carlislefsp.com](http://www.carlislefsp.com) | 800.654.8210

